

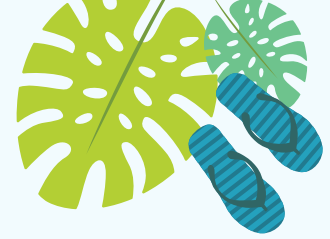


# GOOD TIME SUMMER VICTORIA 2024



## GOOD TIME SUMMER SCHEDULE

Weekday activities start at 3:00 pm



TIME	MONDAY	TUESDAY	WEDNESDAY	THURSDAY	FRIDAY	SATURDAY	SUNDAY
<b>WEEK 1</b>	July 1	July 2	July 3	July 4	July 5	July 6	July 7
9:00~3:00	Canada Day (School Closed)	New Student Orientation & ESL	ESL	ESL	ESL	Vancouver Day Trip	
<b>AFTER SCHOOL</b>		Free Time	Downtown Walking Tour	Fisherman's Wharf	Beacon Hill Park		Free Time
<b>WEEK 2</b>	July 8	July 9	July 10	July 11	July 12	July 13	July 14
9:00~3:00	New Student Orientation & ESL	ESL	ESL	ESL	ESL	Butchart Gardens	
<b>AFTER SCHOOL</b>	Laser Tag	Free Time	Kayaking / Paddling	Free Time	Movie Night		Free Time
<b>WEEK 3</b>	July 15	July 16	July 17	July 18	July 19	July 20	July 21
9:00~3:00	New Student Orientation & ESL	ESL	ESL	ESL	ESL	Skywalk	
<b>AFTER SCHOOL</b>	Craigdarroch Castle	Free Time	Ogden Point Breakwater	Free Time	Ice Skating		Free Time
<b>WEEK 4</b>	July 22	July 23	July 24	July 25	July 26	July 27	July 28
9:00~3:00	New Student Orientation & ESL	ESL	ESL	ESL	ESL	Whale Watching	
<b>AFTER SCHOOL</b>	Shopping	Free Time	Royal BC Museum	Free Time	Board Game Cafe		Free Time
<b>WEEK 5</b>	July 29	July 30	July 31	Aug 1	Aug 2	Aug 3	Aug 4
9:00~3:00	New Student Orientation & ESL	ESL	ESL	ESL	ESL	Vancouver Day Trip	
<b>AFTER SCHOOL</b>	Free Time	Downtown Walking Tour	Fisherman's Wharf	Free Time	Beacon Hill Park		Free Time
<b>WEEK 6</b>	Aug 5	Aug 6	Aug 7	Aug 8	Aug 9	Aug 10	Aug 11
9:00~3:00	BC Day (No School)	New Student Orientation/ ESL	ESL	ESL	ESL	Butchart Gardens	
<b>AFTER SCHOOL</b>		Free Time	Kayaking / Paddling	Free Time	Movie Night		Free Time
<b>WEEK 7</b>	Aug 12	Aug 13	Aug 14	Aug 15	Aug 16	Aug 17	Aug 18
9:00~3:00	ESL	ESL	ESL	ESL	ESL	Skywalk	Departure
<b>AFTER SCHOOL</b>	Craigdarroch Castle	Free Time	Ogden Point Breakwater	Free Time	Ice Skating		

## GOOD TIME SUMMER SCHEDULE

### THE PROGRAM INCLUDES

- 25 hrs/week ESL Classes
- Registration Fee
- Material Fee
- After-Class Activities per week
- 1 Saturday Activity per week
- Graduation Certificate

### HOMESTAY OPTION INCLUDES

- Placement Fee
- Single room with 3 meals a day/packed lunch for school days
- Airport Pick up and Drop Off from Victoria airport or ferry station

### NOT INCLUDED

- Insurance (\$2.80/day)
- Custodian Document fee
- Local Transportation Pass (\$50/ per calendar month)

START DATE	2 WEEKS END DATE	3 WEEKS END DATE	4 WEEKS END DATE	5 WEEKS END DATE	6 WEEKS END DATE	7 WEEKS END DATE
July 2	July 13	July 20	July 27	August 3	August 10	August 17
July 8	July 20	July 27	August 3	August 10	August 17	--
July 15	July 27	August 3	August 10	August 17	--	--
July 22	August 3	August 10	August 17	--	--	--
July 29	August 10	August 17	--	--	--	--
August 6	August 17	--	--	--	--	--

- Check-in & Check-out: Sunday (*Check in on July 1, 2024 for the first week*)
- Minimum registration: 2 weeks
- Students opting to stay for the entire Program duration may repeat some of the activities. See the sample schedule.

	2 WEEKS	3 WEEKS	4 WEEKS	EXTRA WEEK
WITH HOMESTAY	\$3,550	\$4,790	\$5,995	\$1,400
WITHOUT HOMESTAY	\$2,540	\$3,405	\$4,235	\$1,025

- All Fees are in CAD
- Extra week fees only apply to registration over 4 weeks.

### For Parents/Guardians:

- In the event that your child is unable to travel home as scheduled due to any emergency or delay and **your child's homestay accommodation is no longer available because of prior booking arrangements**, SSLC requires that the parent/guardian be responsible for all associated fees for the care of their child until such time that they can depart Canada.
- The associated fees in the above case mentioned may include but are not limited to: **Hotel accommodation, 3 meals/day, transportation, new flight arrangements and staff support services as needed.**
- Your child must travel with a credit card, or a Credit Card must be provided to SSLC for all charges as needed. **SSLC will not pay for any related costs.** We suggest using the services of [www.sidekickcard.com](http://www.sidekickcard.com) for these emergency situations and be well prepared as a parent.
- Your child must also carry **Travel Insurance**, and we request that you purchase one extra day of coverage. You can purchase medical insurance from SSLC, please ask our staff.
- Please note if you requested Custodial services from SSLC, we are not responsible for any fees or costs related to Medical Emergencies.
- Parents and student will sign a separate consent form upon registration.

