



FLAP

Foreign
language
adventure
program



winter

2024 - 2025



The
school
where the
world
meets.





FLAP Winter

2024 | 2025

START DATE: DEC. 15TH, 2024

END DATE: FEB. 8TH, 2025

The BLI FLAP Winter camp programs offered by BLI provide an exceptional opportunity to learn English and French while engaging in a diverse range of thrilling activities, all within a secure and nurturing environment.

We offer various program options:

- FLAP Homestay
- FLAP Residence
- FLAP Day Camp
- FLAP Day and Weekend Camp
- FLAP Language Camp



LOCATION

Montreal or Quebec City



PROGRAM LENGTH

2 to 8 weeks



AGES

FLAP Homestay 12-17

FLAP Residence 8-17

FLAP Day Camp 8-17

FLAP Day and Weekend Camp 8-17

FLAP Language Camp 8-17



ACCOMMODATION

Montreal: Residence, Homestay, or Day camp (no accommodation)

Quebec: Homestay, or Day camp (no accommodation)



ENGLISH & FRENCH LEVELS

Beginner to advanced



STUDENTS MUST ARRIVE ON SUNDAY AND LEAVE ON SATURDAY

**CUSTOMIZED PACKAGES
FOR GROUPS ARE AVAILABLE
YEAR-ROUND.**



All-Inclusive Program

THE FLAP HOMESTAY AND RESIDENCE PROGRAMS INCLUDE:

- Registration fee
- English and French courses (24 lessons per week)
- Materials
- Accommodation placement fee
- Shared accommodation (depending on the selected option)
- Three meals per day (special dietary needs and extra portions are subject to additional fees)
- Everyday activities: Full-day outings and weekend outings (depending on program length and start date)
- Transit pass
- Medical insurance
- Airport pick-up & drop-off
- Supervision
- Custodianship letter
- Unaccompanied minor traveling alone service (minors will be escorted to the airport to ensure a safe departure)

THE FLAP PROGRAM DOESN'T INCLUDE:

- Personal expenses (extra snacks, souvenirs, etc.)
- Airplane ticket
- A security deposit of \$250 CAD in cash (Residence only)
- Christmas dinner party
- New Year's Eve dinner party
- Meals during weekend tours
- Optional New York Trip



Day Camps

OPTIONS:

1. Language Camp: Course only
2. Day Camp: Course + 5 after-school activities per week
3. Day and Weekend Camp: Course + after-school activities + weekend outings

LANGUAGE CAMP INCLUDES:

- Registration fee
- English or French courses (24 lessons per week)
- Materials
- Supervision
- BLI Certificate

DAY CAMP INCLUDES:

- Registration fee
- English or French courses (24 lessons per week)
- Materials
- Daily Activities (Monday to Friday)
- Supervision
- BLI Certificate

WEEKEND CAMP INCLUDES:

- Registration fee
- English or French courses (24 lessons per week)
- Materials
- Daily Activities (Monday to Friday)
- Supervision
- BLI Certificate
- Weekend outings

CAMPS DON'T INCLUDE:

- Personal expenses (extra snacks, souvenirs, etc.)
- Airplane ticket
- Accommodation placement fee
- Shared accommodation
- Christmas dinner party
- Meals
- Transit pass
- New Year's Eve dinner party
- Optional New York Trip





FLAP Day

example

BREAKFAST

7:30 AM – 8:30 AM

ENGLISH/FRENCH CLASSES

9:00 AM – 12:00 PM

LUNCH

12:00 PM – 12:50 PM

ENGLISH/FRENCH CLASSES

12:50 PM – 2:05 PM

ACTIVITIES

2:05 PM – 6:00 PM

OVERNIGHT CAMP ONLY

DINNER

6:00 PM – 8:00 PM

ACTIVITIES AT STUDENT RESIDENCE

8:00 PM – 10:00 PM

ROOM CHECK

10:00 PM

BEDTIME

10:30 PM

NOTE: THE WEEKEND
SCHEDULE DEPENDS
ON THE PLANNED
EXCURSION.

FLAP Winter

Teen Language and Activity Camp

With numerous attractions to explore, local ski hills, and abundant white snow, Montreal and Quebec City are ideal cities for spending the winter and having a great time. FLAP participants will gain fantastic educational and life experiences while also forming friendships with people from around the globe.

ACTIVITIES AND WEEKEND TOURS

Experience an enriching winter with our diverse activity program, featuring skiing, ice skating, snow-tubing, shopping, sightseeing, and visits to iconic attractions like the Biodome, Biosphere, and Botanical Gardens. Don't miss thrilling hockey games or captivating weekend tours to destinations like Toronto, Niagara Falls, Quebec City, the Ice Hotel, and beyond.

ACCOMMODATION

Homestay

Living with a host family offers a comforting home away from home experience. Our host families are carefully selected to ensure a welcoming environment.

The homestay option includes:

- Shared room
- Three meals per day
- Support from the host family

Residence

Our student residence in Montreal, just 5 minutes from our main campus, offers an immersive experience for the duration of your program. Living in residence allows you to connect with other international students, fostering a sense of community and cultural exchange. Throughout your stay, you will have access to 24/7 support and supervision from our friendly staff, ensuring that you feel supported and at home during your time with us.

The availability of activities and excursions depends on the activity schedule, travel dates, and the campus chosen by each student.



High Quality Academic Program

BLI guarantees the highest quality in our programs, led by experienced, professional, and certified instructors.

Our strong communicative-based curriculum is specifically designed to teach and motivate young learners and keep them interested in our classes. It makes learning what it should be: FUN!

All topics are carefully curated, age-appropriate, and tailored to teenagers and their interests.

With small classes, capped at 18 students each, we provide the individual attention students need.

Classes are held at our main campus in the heart of Montreal or our beautiful Quebec School, both easily accessible by public transport.

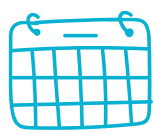
In the mornings, students engage in general English and French studies within the day's theme. Afternoons are dedicated to collaborative projects, allowing students to apply their learning.

Our workshops cultivate linguistic autonomy, flexibility, and tangible results by encouraging students to collaborate with teachers and peers. Through engaging in daily projects, students develop valuable skills and present their work confidently after each class, reflecting the positive outcomes of their collaborative efforts.

WEEKLY LESSONS BASED ON SPECIFIC THEMES

- Art
- Technology
- Science
- Food
- Culture
- Sports





Activity calendar

WINTER FLAP 2024 - 2025

Sunday



15

Welcome Students

Monday

Tuesday

Wednesday

Thursday

Friday

Saturday

Sunday



16



17



18



19



20



21



22

Old Walking Tour

Biodome

Saint Joseph's Oratory

Ice Skating

Tubing

Ottawa

Christmas Dinner



23



24



25



26



27



28



29

Snowman Competition

Boxing Day

Biosphere

Fine Arts Museum

Toronto & Niagara

Toronto & Niagara

Toronto & Niagara New Year's Party**



30



31



1



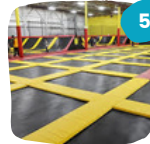
2



3



4



5

Tubing

Mont Royal

Planetarium

Aura Show

Skiing

Quebec City

Trampoline



6



7



8



9



10



11



12

Ice Skating

Bowling

Botanical Garden

Tubing

Outlet Mall

Quebec City

Ottawa



13



14



15



16



17



18



19

Hockey Game

Saint Joseph's Oratory

Ice Skating

Trampoline

Amazing Race New York**

Snowman New York**

Shopping New York**



20



21



22



23



24



25



26

Old Montreal

Biodome

Ice Skating

Tubing

Quebec City

Ottawa

Trampoline



27



28



29



30



31



1



2

Snowman Competition

Place des Arts

Biosphere

Fine Arts Museum

Toronto & Niagara

Toronto & Niagara

Toronto & Niagara



3



4



5



6



7



8

Saint Joseph's Oratory

Ice Skating

Planetarium

Aura Show

Tubing

Farewell Students

December

January

February

*THIS IS AN EXAMPLE, ACTIVITIES ARE SUBJECT TO CHANGE WITHOUT NOTICE



Fees

Start Dates

FLAP – TEEN CAMP WITH ACCOMMODATION

WEEKS	RESIDENCE MONTREAL 8+ YEARS OLD	HOMESTAY MONTREAL 12+ YEARS OLD	HOMESTAY QUEBEC 12+ YEARS OLD
2	\$4810	\$3580	\$3499
3	\$6650	\$4735	\$4510
4	\$8350	\$6130	\$5675
5	\$9275	\$7200	\$6999
6	\$10900	\$8400	N A
7	\$11995	\$9150	N A
8	\$12800	\$10300	N A
Extra day	\$400	\$400	\$440

OTHER FEES

Residence campers must provide a cash security deposit of \$250 CAD upon arrival, which is refundable at the end of the stay.

- Christmas Dinner party: \$90 CAD
- New Year's Eve Party: \$90 CAD
- Optional New York Trip: \$505 USD

START DATES WITH ACCOMMODATION

2 weeks - DEC 15 | DEC 29 | JAN 12 | JAN 26

3 weeks - DEC 15 | DEC 22 | DEC 29 | JAN 05 | JAN 12 | JAN 19

4 weeks - DEC 15 | DEC 22 | DEC 29 | JAN 05 | JAN 12

5 weeks - DEC 15 | DEC 22 | DEC 29 | JAN 05

6 weeks - DEC 15 | DEC 22 | DEC 29

7 weeks - DEC 15 | DEC 22

8 weeks - DEC 15

Registration deposit (non-refundable) \$350

This payment must be made at the time of registration and will be deducted from the total amount.

FLAP – KIDS* & TEEN CAMP (NO ACCOMMODATION)

DAY CAMP COURSES + ACTIVITIES **	DAY CAMP COURSES + AFTER SCHOOL ACTIVITIES ***	DAY CAMP COURSES ONLY
\$2730	\$1550	\$845
\$3625	\$2175	\$1150
\$4550	\$2800	\$1345
\$5565	\$3425	\$1785
\$6426	\$4050	\$2090
\$7045	\$4725	\$2420
\$7833	\$5400	\$2750
\$265	\$200	\$175

**This option includes courses, after-school activities, and weekend outings.

***This option includes courses and after-school activities.

START DATES WITH NO ACCOMMODATION

2 weeks - DEC 16 | DEC 30 | JAN 13 | JAN 27

3 weeks - DEC 16 | DEC 23 | DEC 30 | JAN 06 | JAN 13 | JAN 20

4 weeks - DEC 16 | DEC 23 | DEC 30 | JAN 06 | JAN 13

5 weeks - DEC 16 | DEC 23 | DEC 30 | JAN 06

6 weeks - DEC 16 | DEC 23 | DEC 30

7 weeks - DEC 16 | DEC 23

8 weeks - DEC 16



STUDENTS WITH ACCOMMODATION MUST ARRIVE ON THE SELECTED START DATE AND LEAVE ON A SATURDAY.

ALL PRICES ARE IN CANADIAN DOLLARS AND ARE SUBJECT TO CHANGE WITHOUT NOTICE.





FAQs

Quebec City & Montreal Fun Facts

66.5% of Montreals speak French as their mother tongue, and 92% are fluent in English and French, making Montreal the most bilingual city in Canada.

Montreal's oldest church, Notre-Dame-de-Bon-Secours Chapel, was established in 1655.

The Underground City – a series of interconnected tunnels beneath Montreal runs for over 32 km (20 mi). In the winter, over 500,000 people use the tunnels daily. The tunnels connect shopping malls, museums, universities, hotels, banks, offices, and seven metro stations.

In Quebec City, you'll discover a rich history within its UNESCO World Heritage-listed Old Town, featuring cobblestone streets and charming European architecture. The iconic Château Frontenac, a historic luxury hotel, stands as the most photographed hotel in the world.

IS THE CITY SAFE?

Students are accompanied by their leader at all times; however, they are allowed to travel independently between their homestay and the winter campuses. While the cities are generally safe and residents are friendly and helpful, students should remain vigilant of their surroundings and promptly report any suspicious activity or discomfort to either a BLI staff member or their homestay family.

AM I ALLOWED TO EXPLORE ON MY OWN?

If you would like to explore the city by yourself or have a family member you want to spend some time with, ask your leader for the authorization form. You may be allowed to leave one time for a period of a few hours.

WHAT IF I GET LOST?

BLI's emergency number will be available 24/7 if you need it. Call or text the emergency number so one of the leaders can come and find you.

WHAT SHOULD I PACK IN MY SUITCASE FOR THE WINTER CAMP?

It's essential to bring comfortable and warm clothing, such as winter jackets, waterproof snow boots, gloves, scarves, and hats. Don't forget to bring enough layers of clothing to keep warm during outdoor activities.

DO I HAVE TO TRAVEL TO SCHOOL BY MYSELF?

If you are staying with a host family, they will give you instructions on how to get to and from school by public transportation. You can always travel with your roommate. Students in residence will always travel with their leaders.



The
school
where the
world
meets.





Live learning

love learning



Email: info@bli.ca



Tel: 514 842 3847



language-camps.com